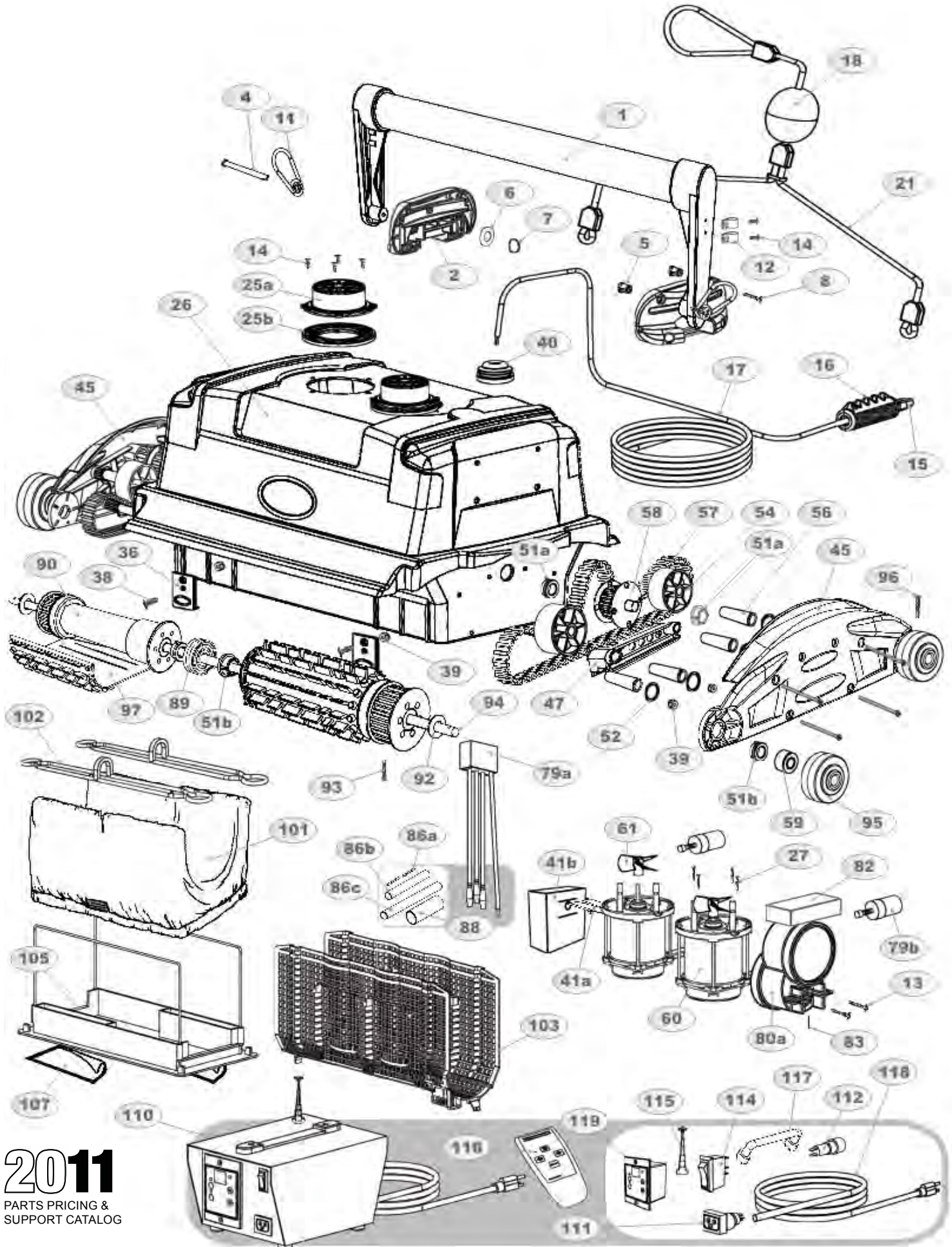


DURAMAX BITURBO T2



ITEM #	PART #	ITEM NAME (Description) - Quantity per DuraMAX BiTurbo T2	LIST PRICE	UNITS
1	A10212	HANDLE ASSEMBLY (Blue, with Brackets) - 1 per machine	\$\$\$\$.00	EA
2	SK2039BL	SK HANDLE BRACKET, OVAL, BLUE;(EA/1/1)	\$\$\$\$.00	EA
4	11003	CLEVIS PIN (Round Head, hole in end, links the Handle Assembly to the Handle Bracket) - 2 per machine	\$\$\$.00	EA
5	5050	BODY INSERT (Brass, Reverse Block Insert, For inside Body to fasten Handle Bracket) - 4 per machine	\$\$\$.00	EA
6	11004	WASHER (St. Steel, for the Clevis Pin on Handle Assembly Bracket) - 2 per machine	\$0.00	EA
7	11005	COTTER RING (Aluminum, 3/16", for the Clevis Pin to hold the Handle Bracket) - 2 per machine	\$0.00	EA
8	2304	SCREW (10-32, 3/4", Pan Head, For fastening the Handle Bracket to the Body Assembly) - 8 per machine	\$\$\$.00	EA
11	11006	HOOK (St. Steel, Snap-Hook, Eyelet for Pin, fastens Rope Assembly to Handles) - 2 per machine	\$\$\$.00	EA
12	2109	P-CLIP (5/16", Blue, Coated Steel) - Use to fasten the 120' Cable Assembly to the Handle) - 2 per machine	\$\$\$.00	EA
13	2700	SCREW (#8, 11/16", Phil Pan-Flat Head, Use to fasten Drive Motors) - 2 per machine	\$\$\$.00	EA
14	2260	SCREW (#6, 7/16", Phil Pan-Flat Head, Use to fasten Outlet Top and P-Clips) - 10 per machine	\$\$\$.00	EA
15	1615	PLUG (3-Pin, Male, 2-Wire) - 1 per machine	\$\$\$\$.00	EA
16	S7930	EZ-SWIVEL (For 2-wire Cable) - 1 per machine	\$\$\$\$.00	EA
17	162120	CABLE ASSEMBLY (2-Wire, 120 Ft., Floating, no Quick-connection) - 1 per machine	\$000.00	EA
18	1602	FLOAT BALL (Large, fasten to Cable the same distance from unit as maximum depth of pool) - 1 per machine	\$\$\$.00	EA
21	A8329	ROPE ASSEMBLY (Blue & White, Nylon) - 1 per machine	\$00.00	EA
25a	2230B1	OUTLET TOP (Blue) - 2 per machine	\$00.00	EA
25b	2250BL2	OUTLET BOTTOM (Blue) - 2 per machine	\$00.00	EA
26	A22025WT2H	BODY ASSEMBLY (White, with Lock Tabs, two Pump holes, Inserts) - 1 per machine	\$000.00	EA
27	2251	SCREW (8-18 x 3/4, Phil Small Head, to fasten Pump to Body) - 8 per machine	\$0.00	EA
36	9204N	LOCK TAB, PLASTIC, NATURAL; (EA/2/2)	\$0.00	EA
38	2303	SCREW (18-8, 8/32" x 1/2", Phil Bev Head, Use to fasten the Lock-Tabs to the Body Assembly) - 4 per machine	\$0.00	EA
39	7133	LOCK-NUT (18-8, 8/32", Nylon Insert, Hex, for Lock-Tabs) - 4 per machine	\$0.00	EA
40	1626	GROMMET (3/8", Sealing, Rubber, Use around Cable Assembly on Body Assembly) - 1 per machine	\$0.00	EA
41a	3477	BRACKET (Plastic, fastens Float to inside of Body Assembly) - 1 per machine	\$0.00	EA
41b	3109	FLOAT (Grey, Foam, requires Bracket, fastened to inside of Body Assembly) - 1 per machine	\$0.00	EA
45	S2038BL	SIDEPLATE ASSEMBLY (New-style design, Blue) - 2 per machine	\$00.00	EA
47	S3387	SPACER BRACKET (Supports Drive Belt, For inside Sideplates) - 2 per machine	\$0.00	EA
50	2711	SCREW (8-32 x 2.75", Screws for Sideplate) - 8 per machine	\$0.00	EA
51a	2600	BUSHING (White, Plastic, For Pulley Assembly) - 1 per machine	\$0.00	EA
51b	2600BKT2	BUSHING (Black, Molybdenum polymer, both ends of each Wheeltube, one for Pulley) - 5 per machine	\$0.00	EA
52	2606	WASHER (White, Delrin plastic, .75" x .032", for sideplate legs) - 4 per machine	\$0.00	EA
54	3508	TENSION ROLLER (Black, Plastic, Supports the Drive Belt) - 4 per machine	\$00.00	EA
56	3626	BUSHING (Stainless Steel, for Sideplate legs) - 4 per machine	\$0.00	EA
57	SK3310	SK BELT SET COMMERCIAL DRIVE BELTS (2) WITH TENSION ROLLERS (4), (EA/1/1)	\$000.00	EA
58	SK3624	PULLEY ASSEMBLY (Includes Flange Washers) - 1 per machine	\$00.00	EA
59	2607	WASHER (Delrin, Spacer, .515"OD x 1"ID x .125Lg., use between Wheeltube and Sideplate) - 4 per machine	\$0.00	EA
60	SA69008	PUMP MOTOR (With Propeller, 2-Pin Female Connect to Capacitor, 2-Pin Male Connect to Junction) - 2 per machine, formerly A6011, installation kit included	\$000.00	EA
61	4400	PROPELLER - 2 per machine	\$00.00	EA
79a	A2306	JUNCTION BOX ASSEMBLY (2-Wire cord to Cable, 2-Pin Fem to Pumps, 2-Pin Fem to Drive Motor) - 1 per machine	\$000.00	EA
79b	6012	RUNNING CAPACITOR (Blue, Cylinder, 2-Pin Male Connect to Pump Motor) - 2 per machine	\$00.00	EA
80	SA89023	DRIVE MOTOR (Air Sensor, 2-Pin Male Connect to Junction) - 1 per machine, formerly A8562, installation kit included	\$000.00	EA
82	3101	UNDER MOTOR FLOAT (For under Drive Motors) - 1 per machine	\$0.00	EA
83	4613	SPIRAL PIN (3/4", solid St. Steel, for end of Drive Motor shaft, use small drop of Lock-Tite) - 1 per machine	\$0.00	EA
86a	5474	CONNECTOR, BUTT, SHRINK, BLUE; (EA/2/2)	\$0.00	EA
86b	1617	SHRINK TUBE, BLACK, 5/16" D; (IN/48/48)	\$0.00	IN
86c	1619	SHRINK TUBE, BLACK 1/2" D; (IN/48/48)	\$0.00	IN
88	1625	SHRINK TUBE (3/4" Wide, Black, Thick Rubber, For sealing electrical connections wider than 1/4")	\$0.00	EA
89	11085	CLUTCH, BLACK, DELRIN; (EA/2/2)	\$0.00	EA
90	SK38226	SK WHEELTUBE KIT, DMXRC, DMXBTT2, DMXDUOJR, S38226, 5050, 2268, DRILLED; (EA/1/1)	\$00.00	EA
90	S38226	WHEELTUBE, S/AS FOR A38226 (DMXR/C)	\$00.00	EA
92	3603	WASHER (Nylon, Flat, Use for end of Wheeltubes inside of Sideplate) - 4 per machine	\$0.00	EA
93	2714	SCREW (10-32, 2.5", Pan Head, to fasten outer Wheel Tube hubs to Axle) - 2 per machine	\$0.00	EA
94	342625	AXLE, S/S, .500 "D x 23.25, "L, DMX2011; (EA/1/1)	\$00.00	EA
95	S700021	WHEEL (Grey, 2.5 inch, with hole for screw, Use on end of the Axles, outside Sideplate) - 4 per machine	\$00.00	EA
95	2691	WHEEL, 2.75" 00 X 1/2 "ID" BLACK	\$00.00	EA
96	2718	SCREW (#8, 2", Fillister head, fastend Grey Wheel to Axle) - 4 per machine	\$0.00	EA
97	S3002BM7	BRUSH, S/AS, RUBBER, MOLDED BLUE 7"	\$00.00	EA
97	SK3029GY	SK, EZ BRUSH, GRAY, HARD, 15.25", 2-SET W PINS; (EA/1/1)	\$00.00	EA
97	SK38226PVA	SK WHEELTUBE KIT, DMXRC, DMXBTT2, DMXDUOJR, S38226, 5050, 2268,3008 DRILLED, PVA BRUSH; (EA/1/1)	\$00.00	EA
97	S38226PVA	WHEEL TUBE, S/AS FOR A38226(DMXR/C, PVA)	\$00.00	EA
101	8101	FILTER BAG (Large, Fine Filter Bag) - 1 per machine	\$00.00	EA
101	8201	FILTER BAG (Optional, Large, Mesh Filter Bag) - 1 per machine	\$00.00	EA
102	8001	FILTER BAG CLIP, PLASTIC, LARGE, BLACK; (EA/2/2)	\$0.00	EA
103	S5313	FILTER SCREEN (Blue, Folding Cage, no attachment strings needed) - 1 per machine	\$00.00	EA
105	A9201XC	BOTTOM LID ASSEMBLY (White, Square Wire Frame) - 1 per machine	\$000.00	EA
106	9301	INTAKE VALVE FLAP (Black PVC Rubber) - 2 per machine	\$0.00	EA
	S3103	H-FLOAT (Optional, Plastic/Foam with Screws, Attach to Bottom Lid to quicken wall-climbing) - 1 per machine	\$00.00	EA
	3104	FLOAT, SIDE POCKET (EA/2/2)	\$0.00	EA
110	A7185	POWER SUPPLY (3-Pin, Female Socket, 1-7hr Shut-Off / Continuous Run Digital Display) - 1 per machine	\$000.00	EA
111	7115	SOCKET ASSEMBLY (3-Pin, Female, 2-Wire) - 1 on Power Supply	\$00.00	EA
112	7005	FUSE HOLDER (Standard, Push & Turn style) - 1 on Power Supply	\$0.00	EA
	7002	FUSE (5.0 Amp, 250 Volt, Slow-Blow) - 1 on Power Supply	\$0.00	EA
113	1799	FAN (Cooling Fan for inside of Power Supply) - 1 on Power Supply	\$0.00	EA
114	7107	WIDE LIGHTED SWITCH (Very Wide, 1 1/2" x 1", Red, 3-Wire) - 1 on Power Supply	\$0.00	EA
115	7024	ANTENNA (Telescopic, with Hardware) - 1 on Power Supply	\$00.00	EA
	A220215	RECEIVER (Radio, 4-Way, Responds to 220112C Transmitter) - 1 on Power Supply	\$000.00	EA
116	220112C	TRANSMITTER (Radio RC, Yellow/ Blue buttons/ Red light, for A220215 Receiver, battery incl.) - 1 per machine)	\$00.00	EA
117	7064	HANDLE (Stainless Steel, with Hardware) - 1 on Power Supply	\$00.00	EA
118	7102	CORD FOR POWER SUPPLY (3-Wire, Green, Black, and White) - 1 on Power Supply	\$00.00	EA
119	7274D	DIGITAL TIMER (Front Digital display, 1-7 hours Adjustable Auto-Off) - 1 on Power Supply	\$00.00	EA

Parts marked with this symbol should be installed by the Factory or an Authorized Service Center. Otherwise a Warranty Waiver must accompany any order for these parts.